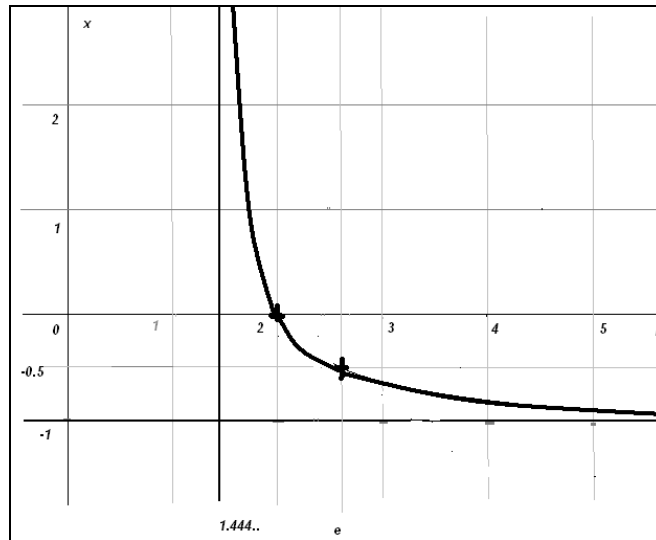


## GFR Qualitative draft

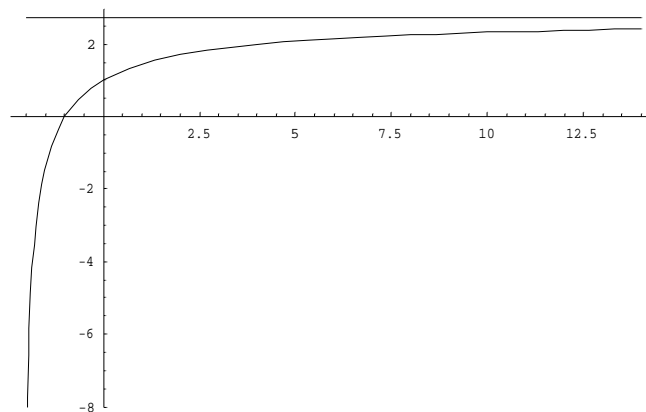
---

The following figure is a simple ... miserable qualitative sketch (visual draft) drawn just to complete my views on the expected (mathematical) phenomenon. It is a complement to a verbal description.

Actually, in my opinion, we should have, for  $x_f(b)$ , something like this, according to my conjecture;



The upper part of the curve  $\lim_{b \rightarrow \eta^+} x_f = +\infty$  seems to be justified by the following plot of  $y = {}^x\eta$ , with  $\eta = 1.444667861..$ , which pushes to  $+\infty$  the abscissas  $x$  of  $y$ ,  $y'$  and  $y''$ :



In fact  $\lim_{x \rightarrow +\infty} {}^x\eta = e$ , i.e.: for  $b \rightarrow \eta$ ,  $x_f \rightarrow +\infty$ . See the first attachment of this thread. But all this needs more precise and formal ... manipulations.

---

**GFR 2008-01-21**