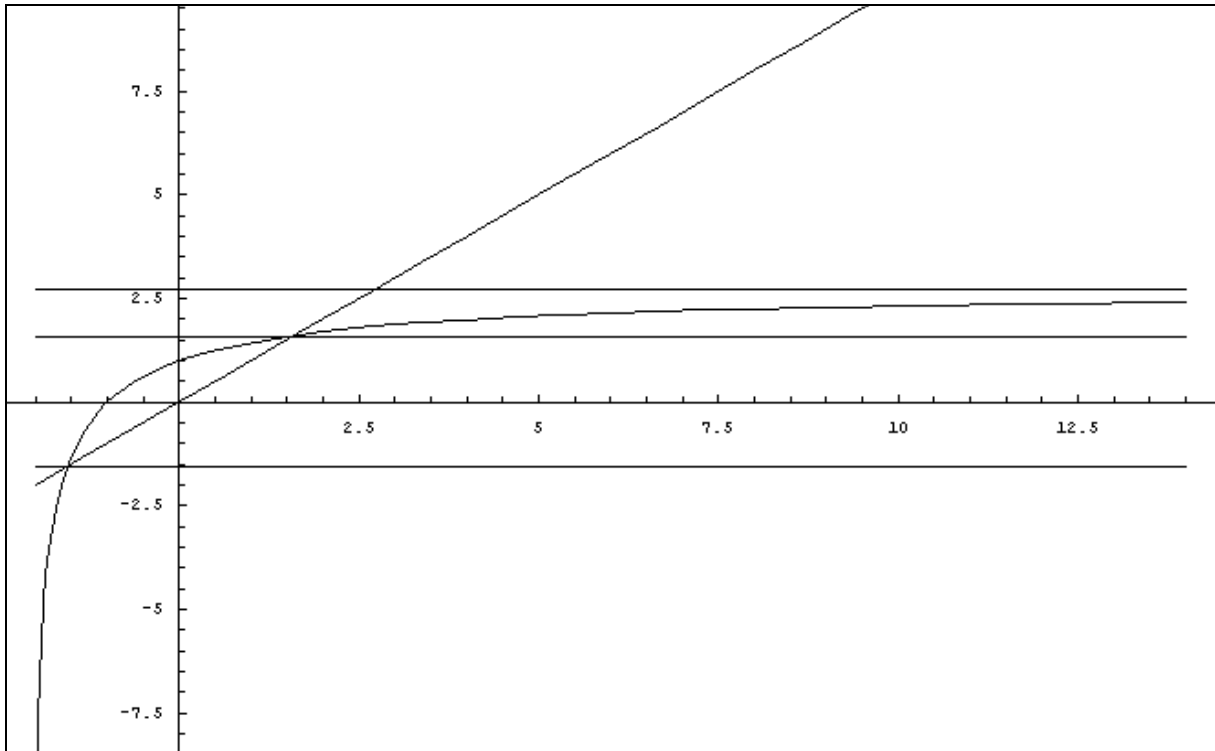


Plot of $y = \eta \sqrt[4]{x}$, with $\eta = e^{(1/e)}$



The plot shows two fixpoints in the $y = \eta \sqrt[4]{x}$, tetration, corresponding to two horizontal asymptotes at $y = \{-\pi/2, +\pi/2\}$ in $y = \eta \sqrt[5]{x}$, pentation..

GFR